

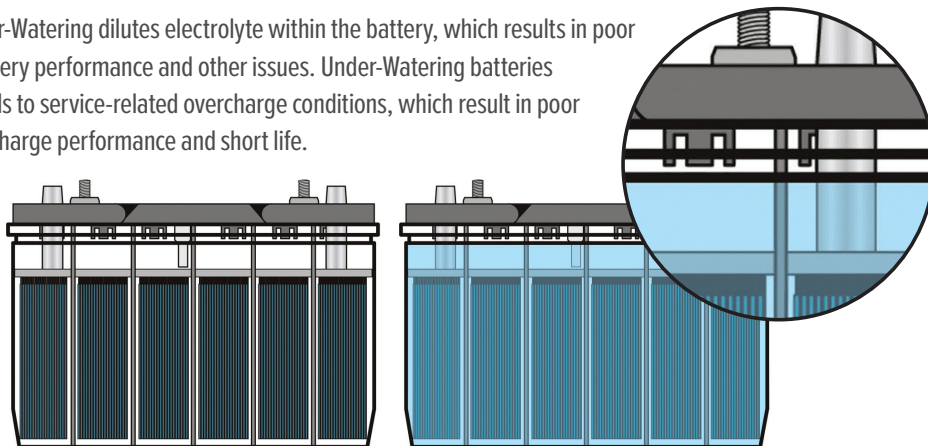
WATERING SERVICE GUIDELINES

FLA Deep Cycle batteries begin service consuming low amounts of water. Deep Cycle battery applications vary, so watering service frequency will vary according to battery use frequency, charging service, the operating environment temperature, and battery age. New batteries should be inspected at a two-week interval to establish a baseline for watering frequency. As your batteries age, or if their use frequency changes, batteries should be inspected weekly as they will need more frequent watering service.

THERE ARE THREE SCENARIOS WHEN WATERING SERVICE CAN BE HARMFUL TO YOUR BATTERIES:

❌ **Over-Watering** ❌ **Under-Watering** ❌ **Use of Non-Distilled Water**

Over-Watering dilutes electrolyte within the battery, which results in poor battery performance and other issues. Under-Watering batteries leads to service-related overcharge conditions, which result in poor discharge performance and short life.



As demonstrated in the above image, maintain battery electrolyte levels above the top of the battery plates – but no higher than battery cover vent well. Never fill batteries to the brim of the cell or to a point where fluid overflows out of the cell.

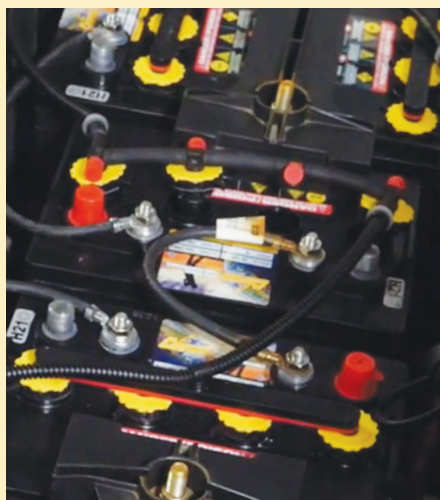


WATERING CRITICAL REQUIREMENTS

- ▶ Always wear safety glasses, gloves, and other protective gear when servicing batteries
- ▶ **USE ONLY DISTILLED OR DE-MINERALIZED WATER**
- ▶ Never add battery acid or other foreign materials to battery electrolyte
- ▶ Watering service should occur only after charging service is completed
- ▶ Never charge batteries if their plates are exposed or not submerged in electrolyte. When this condition is detected, fill the battery only until the tops of plates are covered with fluid
- ▶ After service is completed – always check that vent caps are tightly secured onto batteries

WATERING BEST PRACTICE RECOMMENDATION

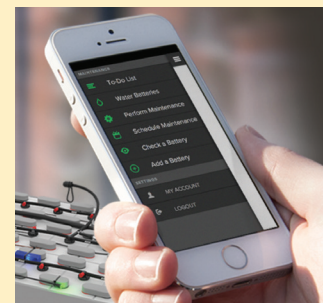
A Single-Point Battery Watering Systems (SPW) is the safest, easiest, and most cost-effective solution for optimizing battery performance and overall life. Crown Battery's FLA Deep Cycle battery array is engineered to integrate with Flow-Rite Controls' Pro-Fill and Qwik-Fill systems as well as other SPW products available from battery maintenance suppliers.



And thanks to proprietary innovations, Crown Deep Cycle batteries can accommodate SWP injectors manufactured by other battery companies which until this point were only compatible for use with their products.

Our preferred Flow-Rite Pro-Fill system also integrates with additional bolt-on solutions that help equipment owners take control of battery management:

- ▶ Advanced Battery Steward allows users to track information from their battery set wirelessly to let you know exactly when your battery requires service – along with battery condition.



- ▶ The Eagle Eye Electrolyte Fluid Level Indicator monitors and displays the status of cell electrolyte levels via highly visible LED signal lighting.

Contact Crown Battery for more information regarding Single-Point Watering maintenance accessories at commercial@crownbattery.com.