



# ACCESS POWER



## Features & Benefits:

- ▶ Smart Charger
- ▶ Charges All Common Battery Types
- ▶ High Efficiency – 92%
- ▶ High Power Factor – 0.95
- ▶ Wireless Radio Standard on All Powerhouse Access Chargers
- ▶ 3 Phase Charge Modes Available
  - 480 VAC
  - 208/240 VAC
  - 575 VAC
- ▶ Multi-Volt DC Operation
- ▶ CEC approved
- ▶ cUL Listed
- ▶ Low Energy Costs
- ▶ Low Weight and Small Footprint
- ▶ Designed for Wall or Rack Mount
- ▶ Simple Programming

-  **Conventional**
-  **Opportunity**
-  **Fast**
-  **Lithium**

# POWERHOUSE ACCESS

## RACK MOUNT AVAILABLE

Designed to be used without additional stand, making this ideal for replacing existing chargers.



## DURABLE CASE

The robust case is coated with a textured baked powder polyester finish to protect against corrosion. Stackable up to four (4) high.

## MULTI-CIRCUIT OPTION

Chargers can be equipped with our Singlepoint AC option, only one AC drop is required to connect 8 chargers (2, 4, 6, 8 options available). If desired, each level can be a different charger model.

## UP TO 40KW FAST CHARGING

By stacking the chargers and connecting the modules in parallel, the shelf mount case allows us to offer high output fast chargers and dual circuit fast chargers.



## BATTERY EVENT LOGGING & REPORTING

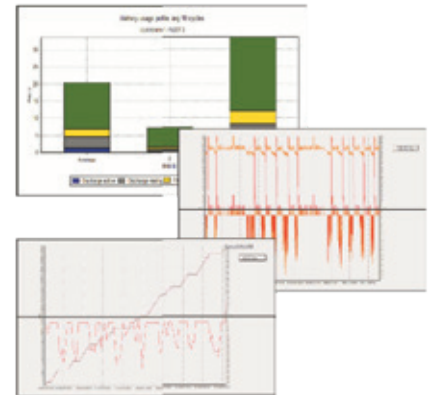


Battery Monitoring Unit (BMU)



USB Dongle

Individual Battery and Fleet Reporting Using Service Tool Software

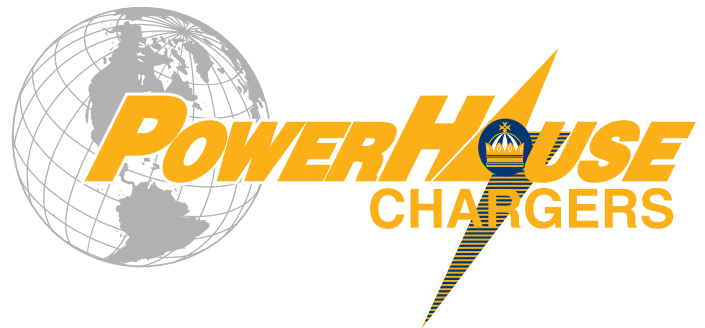


## BEST BATTERY CHOICE

- ▶ Built-in Feature to FIFO Battery Choice
- ▶ External I/O Control and Display Available
- ▶ Create Your Own Group ID
- ▶ Charger Display Will Indicate Best Choice by Displaying Green for Each Group ID

## GET-CLOUD

- ▶ Online Data Management
- ▶ Improved Fleet Management
- ▶ Remote Viewing
- ▶ Widget Based Web Interface
- ▶ One Button Reporting



1445 Majestic Drive | P.O. Box 990  
Fremont, OH 43420 USA  
+1.419.334.7181 | sales@crownbattery.com  
www.crownbattery.com