



# TRAC

**The Power Behind Performance**

*Lawn, Tractor & Utility Batteries*



## MAINTENANCE FREE

Crown's TRAC Batteries are specially designed to provide extremely high power with no compromises and a life span that makes the competition nervous. TRAC Batteries are completely sealed and feature a flat-top CleanFit™ cover design and corrosion-free terminals to deliver Zero Maintenance – and dependable performance under the most extreme conditions.

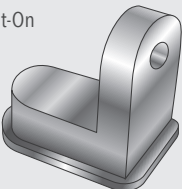
### Performance When the Power is On:

- ▶ Exact-fit OEM replacement batteries for all applications
- ▶ Sealed, maintenance-free and super-clean design
- ▶ Problem-free performance
- ▶ A power, dependable choice for all utility starting demands

BCI Group	Model Description	Item Number	Electrical Capacity			Inches			Millimeters			Weight		Product Footnotes
			Volts	CA Rating	CCA Rating	L	W	H	L	W	H	Lbs	Kgs	
<b>SEASONAL UTILITY BATTERIES</b>														
U1L	TRAC-XD	SU1LXD	12	425	340	7.76	5.12	7.28	197	130	185	18	8.3	HML
	TRAC-HD	SU1LHD	12	335	270	7.76	5.12	7.28	197	130	185	17	7.7	HML
	TRAC-RD	SU1LRD	12	285	230	7.76	5.12	7.28	197	130	185	16	7.2	HML
U1R	TRAC-XDR	SU1RXD	12	425	340	7.76	5.12	7.28	197	130	185	18	8.3	HML

Specifications effective as of January 1, 2018.

L Style Bolt-On Terminal



#### FOOTNOTES KEY:

- H** = CleanFit™ Flush Manifold Vented Cover
- M** = Maintenance-Free Calcium Alloy Construction
- L** = L Style Bolt-On Terminal

Because Crown Battery is continually improving its products, specifications are subject to change without notice. The most current product information is listed on the seller's website at [www.crownbattery.com](http://www.crownbattery.com). The information included on the website may amend and supersede the information in this brochure. Purchasers are encouraged to visit the website to view the most current information.